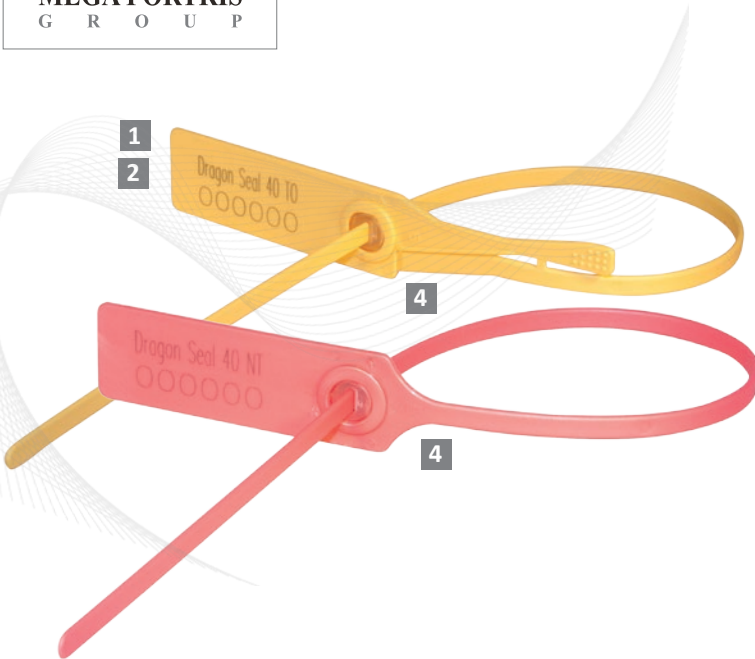


Indicative Seal · Data Sheet

Dragon Seal



Strong Indicative Security Seal with Metal Locking Device

The Dragon Seal is a practical and effective bag seal for high-security applications with its user friendliness, unique stainless steel metal locking mechanism, and large marking area.

Used largely for the securing of high value goods in transit, the Dragon Seal is popular for sealing and securing airline cargo, bank and postal services roll cages, clinical waste management, courier services, cash-in-transit, warehouses and other applications that require seals with a high tensile strength.

Features

- 1 The Dragon Seal is etched with permanent laser marking. Laser marking offers the highest level of security as it cannot be removed and replaced.
- 2 The large flap area allows ample space for marking.
- 3 The Dragon Seal has a unique stainless steel locking plate that strengthens the locking chamber, which is also highly tamper-evident for improved protection.
- 4 The Dragon Seal comes in two versions — tear off (TO) and non-tear off (NT) — for easy and customised applications based on different customer requirements. The tear off mechanism enables the seal to be removed easily by the user.
- 5 The Dragon Seal is a long, strong and durable seal designed specifically to secure bags and sacks, with embedded spikes to provide a better strapping grip.

Technical Specifications

PRODUCT

Material	Locking Space	Strap Dimensions	Pull Strength	Marking Area	Max Marking Digits
Body: PP	320 mm	6.0 mm(w) x 1.8 mm(t)	42kg	Flap: 20 mm x 55 mm	14
Metal Pin: Stainless Steel	380 mm	6.0 mm(w) x 1.8 mm(t)	42kg	Flap: 20 mm x 55 mm	14

INNER CARTON

NT/TO	Carton Quantity	Dimensions (mm)	Weight kg/carton	Volume m ³ /carton	Standard Colours
DS 34	1,000 pcs	562 x 362 x244	8.58	0.04333	
DS 40	1,000 pcs	562 x 362 x244	9.42	0.04333	



FMM EXCELLENCE AWARD 2012
QUEST FOR CONTINUOUS IMPROVEMENT
BEST MANUFACTURER IN MALAYSIA IN 2012